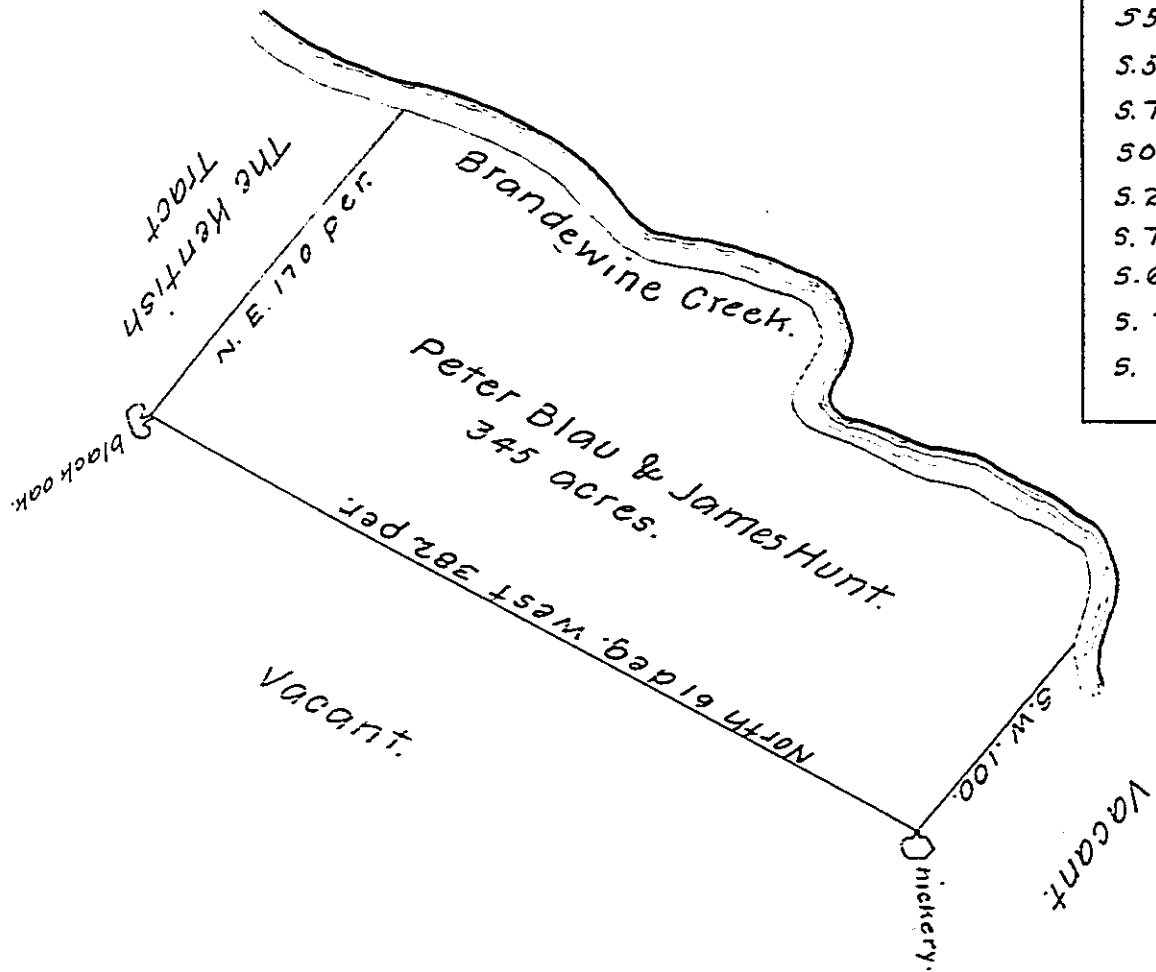


The Courses down  
Brandewine -

558 E.	76
S. 50 E.	44.
S. 75 E.	80.
South	13
S. 28 W.	36
S. 70 E.	60.
S. 60 E.	40
S. 70 E.	40
S. 8 W.	50.



Situate in the Township of Bensalem in ye County of Chester  
Surveyd the 12<sup>th</sup> day of ye 7<sup>th</sup> month anno. 1704 by virtue of a  
Warrant from the Comissioners dated the 31<sup>th</sup> of ye 10<sup>th</sup> month  
1701.

Pr. Isaac Taylor. —

IN TESTIMONY that the above is a copy of the original remaining on file in  
the Department of Internal Affairs of Pennsylvania, made  
conformably to an Act of Assembly approved the 16th day of  
February, 1833, I have hereunto set my Hand and caused  
the Seal of said Department to be affixed at Harrisburg,  
this twenty fourth day of September, 1907

*Henry Howell*  
Secretary of Internal Affairs.